

Connecting to a Windows Server for the first time

This document will take you through the process of connecting to a Windows Dedicated or Virtual server for the first time. These steps are pretty much identical regardless of the version of Windows server or whether you have a dedicated or virtual server. To connect to your server you need to ensure that the server has been installed, find the details that you can use to login to your server and then use remote desktop to connect to the server. Details of these steps are below.

1 – Ensuring that your Server has been installed

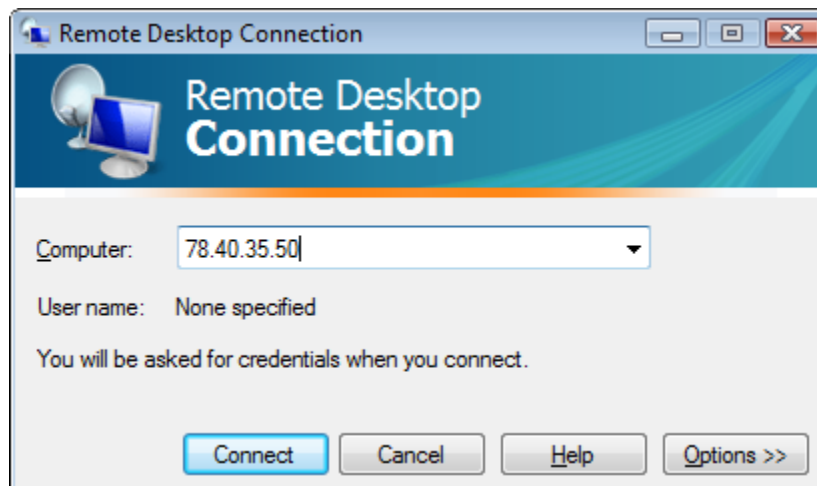
Your server will be set up by Bet Angel and Bet Angel Professional will be installed for you.

2 – Finding the login details for your Server

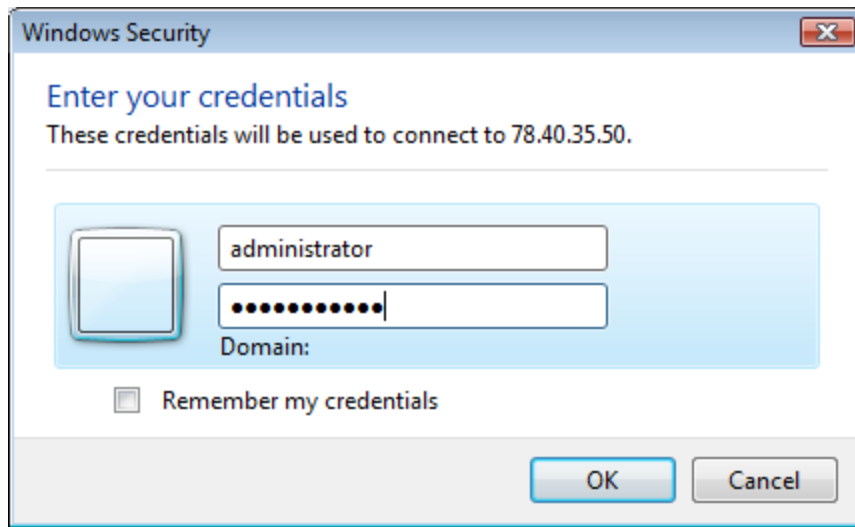
We will send an email containing all your log in information. Keep this email safe and make a note of the details.

3 – Logging in using Remote Desktop

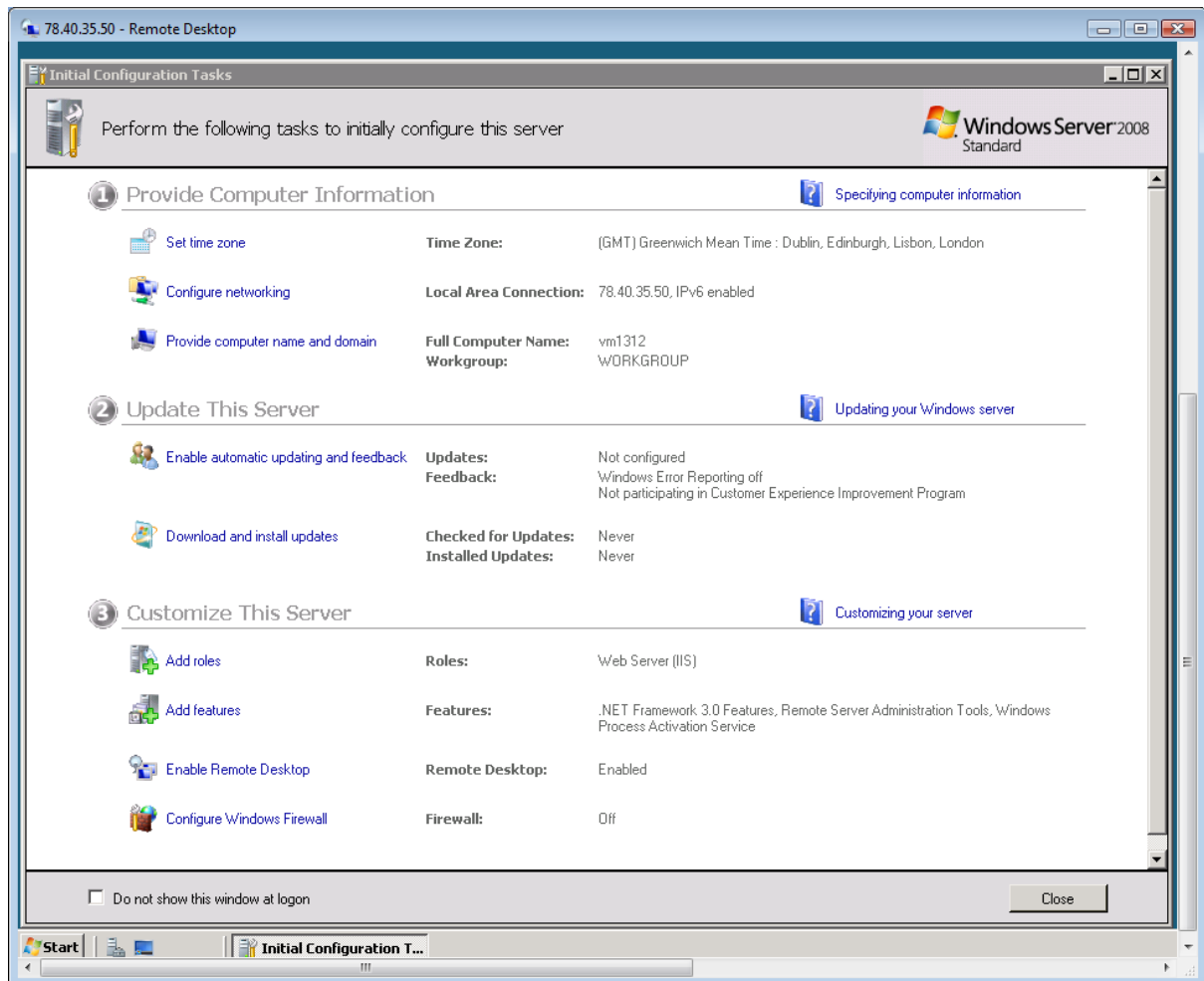
You can connect to and manage your Windows server using remote desktop. This application is available as standard in Windows XP professional, Windows Vista Business and Windows Vista Ultimate. The client can be downloaded for many other operating systems however. By default you would access the remote desktop client from Start -> All Programs -> Accessories on a Vista machine, and from Start -> All Programs -> Accessories -> Communications on a Windows XP machine. Alternatively you can start the program using Start -> Run -> mstsc.exe Once you have started remote desktop, you'll need to enter the IP address of your server and click 'Connect':



If you are using Windows Vista you will have to confirm that you trust this connection, and then you will be prompted to enter the username and password:



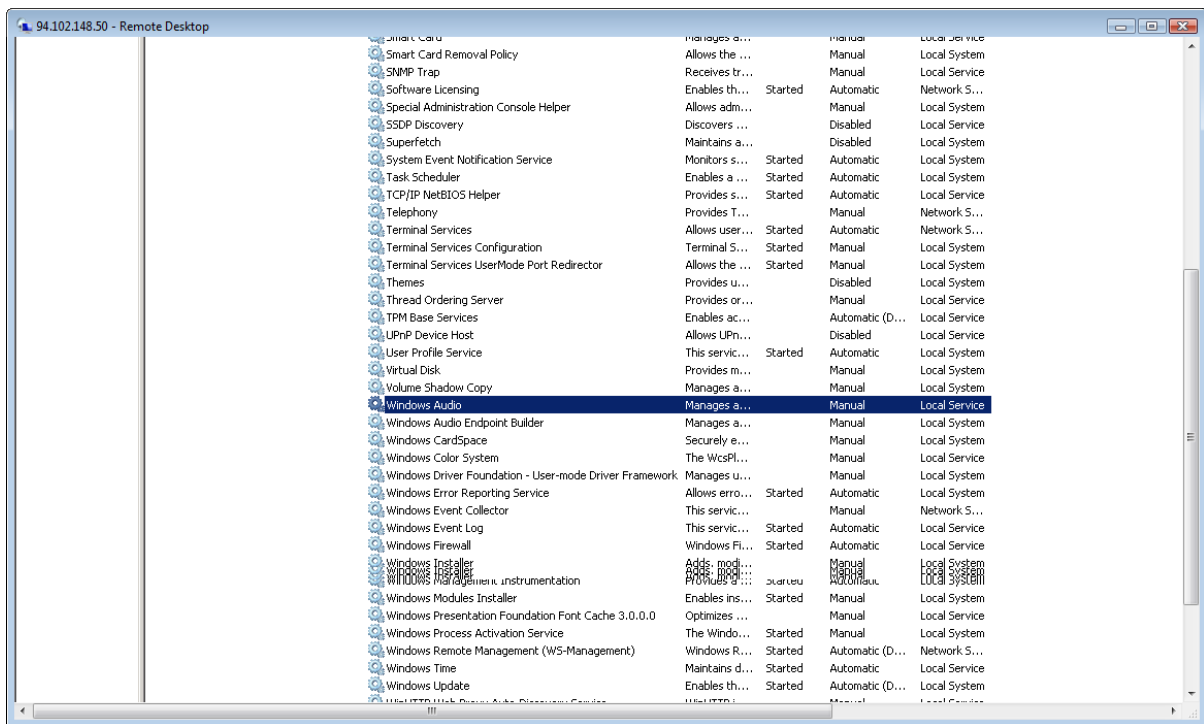
Enter your username and password. This will not be your Betfair details at this stage but the VPS details sent to you. After you have clicked 'OK' you will see the desktop of the server and be able to start configuring it. An example Windows 2008 desktop would be:



Enabling Audio Support on a Windows VPS

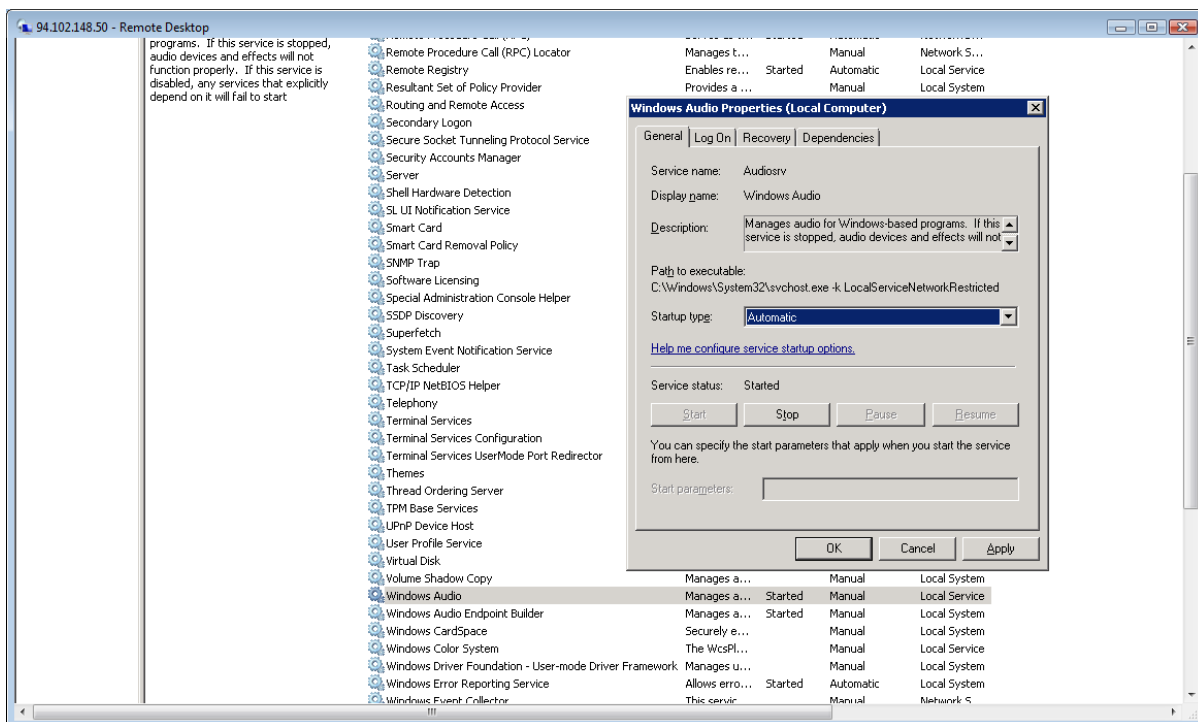
If you have a Windows VPS and want to hear audio output from it, all you have to do is follow the steps below once you're logged on to the VPS via remote desktop.

1. Click the 'start' button, select 'run' from the menu and run the command `services.msc`
2. Scroll through the list of services until you find the Windows Audio Service (see image)



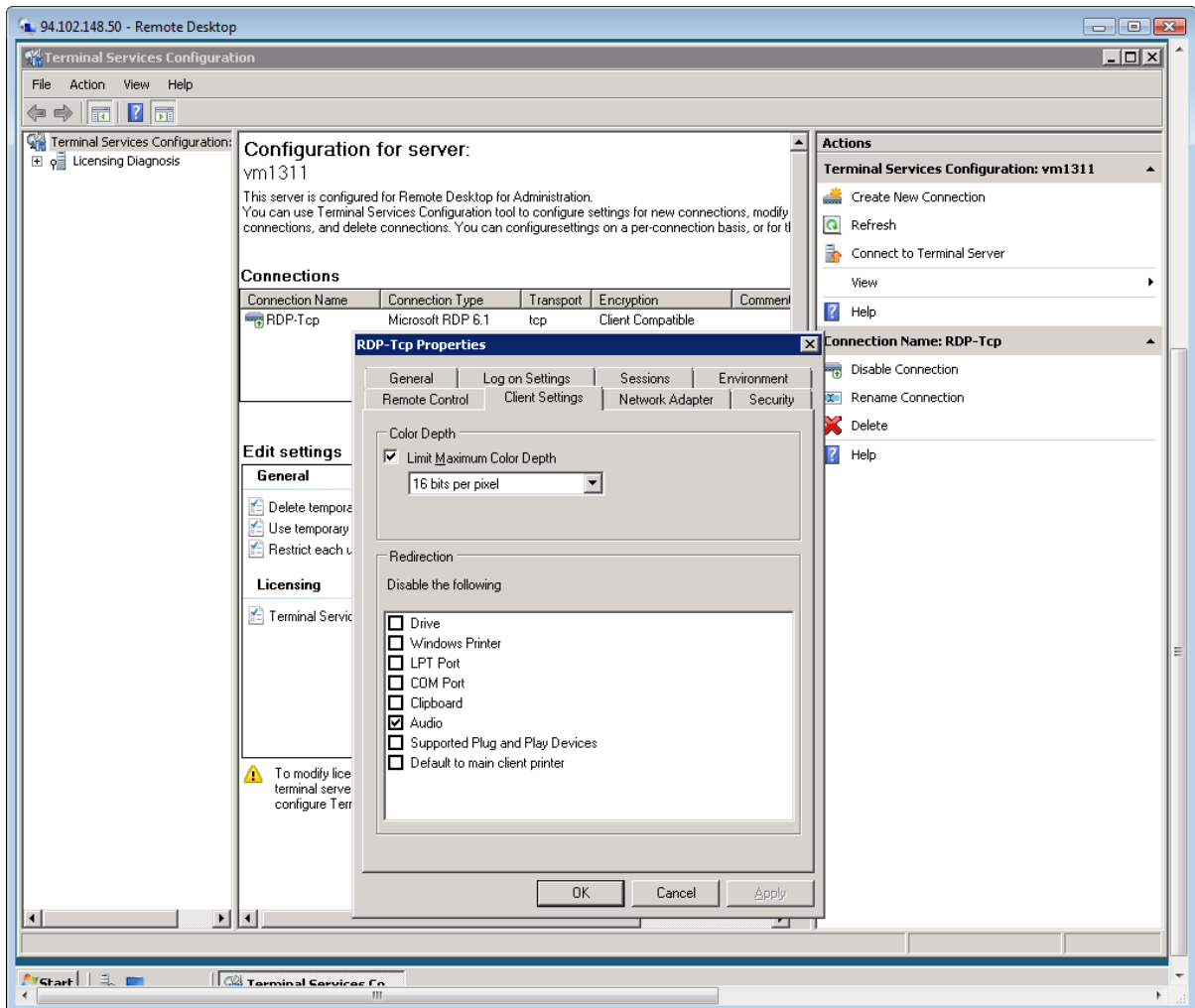
3. Right-click the service and select 'start' to start the Windows Audio service (this should start Windows Audio Endpoint Builder service as well).

4. Right-click the service, select 'properties' from the menu and in the 'General' tab set the startup type to 'Automatic'. Do this for both services.



5. Click the 'Start' button, select 'administrative tools', then 'terminal services' and finally 'terminal services configuration'.

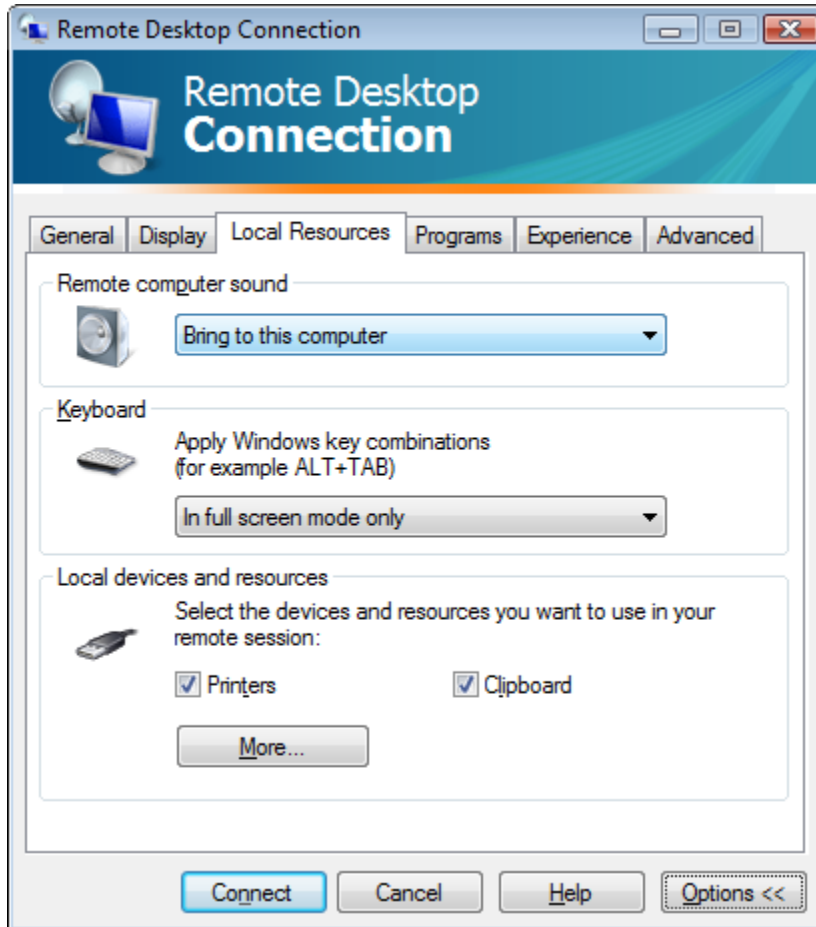
6. In the Terminal Services Configuration window, right-click the RDP-TCP connection and select 'properties'.



7. Go to client settings tab, untick the 'Audio' box in the 'Redirection' settings, click 'apply' and 'OK'. You'll get a notification warning you that the settings won't apply to this session.

8. Close the configuration window and log-off your VPS

9. Start RDP on your client machine. Click the 'options' button, navigate to the 'Local Resources' tab and make sure that 'Remote Computer Sound' is set to 'Bring to this computer'.



10. Reconnect to your VPS, audio output from the remote machine should now be audible on your local machine.

FAQ's and other things to be aware of.

Data Request Charges

When disconnecting from the VPS remember it will keep running even if you are not connected to it. This means if you have a Bet Angel session running on the VPS and then open a session on your local machine you will have two sessions running. Betfair data request charges may be incurred unless you reduce the number of calls made per second in the rules tab of each open application.

If you do not need Bet Angel running on the VPS remember to close it before closing the VPS session.

How can I connect to multiple monitors?

Remote Desktop Connection supports high-resolution displays that can be spanned across multiple monitors. The monitors must be the same resolution and aligned side by side. To have the remote computer's desktop span multiple monitors, type `Mstsc /span` at a command prompt.

Note

This feature is sometimes called continuous resolution. To toggle in and out of full-screen spanned mode, press `CTRL+ALT+BREAK`.

Can I install and link to Excel?

Yes. We found the best way to install Excel on the server is to download the trial from Microsoft and then use a purchased product key. Installing from CD is not recommended.